

Project Name:_____Date:____/____/____

MCA Elevator Design ☐ Standard Specification
Origin: Thailand

Signature:_____

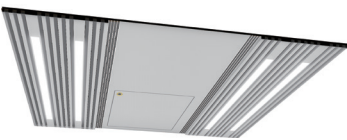
CEILING



☐ **RF-013A**
Painted steel_WN01
(Ivory White)



☐ **DP-016A**
Painted steel_YM47
(Matte Champagne)



☐ **CE-015A**
Painted steel_WN01
(Ivory White)

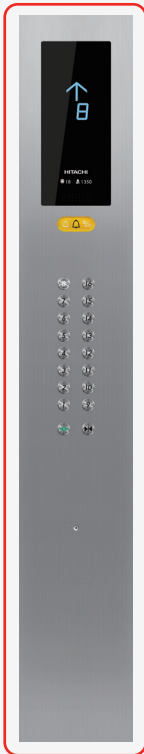


☐ ***RF-056A**
Painted steel_WN01
(Ivory White)

*Select when false ceiling is by Client

CAR OPERATING PANEL

Front wall



GOPR-820

Monochrome
LCD
☐



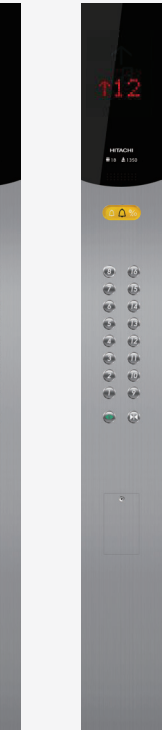
GOP-677

Dot Matrix
☐



GOP-198

Colour
LCD
☐



Side wall

Monochrome
LCD
☐

Dot Matrix
LCD
☐

HORIZONTAL OPERATING PANEL

(With faceplate: stainless steel hairline)



GOP-610



BUTTON



WL-MWB



WL-MW



GL-MW



FL-PW



*Braille button ☐

Floor Name: _____

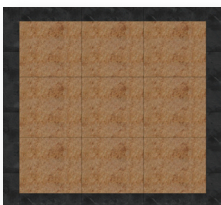
*Braille button maximum 2 digits

CAR FLOOR

☐ **A-26**



☐ ***FL-P009**



☐ **S-048**



☐ **S-693**



☐ **BY OTHER**



**LOCAL
GRANITE
FLOOR**

☐ **RECESS 25MM**

☐ **RECESS 20MM**

*The above represents the whole floor area in the elevator car

HALL OPERATING PANEL

(With faceplate: stainless steel hairline)

Floor name: _____



VIB-820/820W



VIB-673/673W



VIB-187A/187WA



HB-673



HBC-820



HANDRAIL

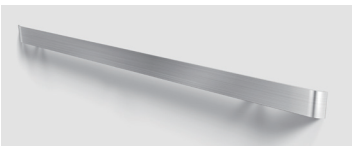


☐ **AA-Y138**

SUS - Hairline

☐ **AA-Y138**

SUS - Mirror



☐ **AA-BS**

SUS - Hairline

Position



1 Side



2 Sides



3 Sides

HALL LANTERN

(With faceplate: stainless steel hairline)



☐ **GHL-673**

Surface mounted
type, with chime



☐ **GHL-820**

Surface mounted
type, with chime

Floor name: _____

HALL INDICATOR



☐ **GHI-675**

With faceplate: stainless steel hairline



☐ **GHI-575**

Without faceplate; incorporate
into transom

Floor name: _____

MATERIAL/DECORATION

STAINLESS STEEL GRADE



SUS 430



SUS 304



CAR DECORATION

1. Side wall: _____

2. Car transom: _____

3. Front return panel: _____

4. Car door: _____

5. Rear wall: _____

ENTRANCE

6. Landing door: _____

7. Jamb type: _____

8. Jamb finish: _____

ETCHING PATTERN



PT-014



MD-315



MD-351

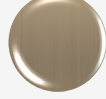
COLOUR STAINLESS
STEEL HAIRLINE



**ROSE
GOLD**



**TITANIUM
GOLD**



**CHAMPAGNE
GOLD**