
MACHINE ROOM ELEVATOR – MCA (THAILAND)

Thang máy có phòng máy – MCA (Thái Lan)

Contents

Nội Dung

1. Introduction of Siam-Hitachi Elevator Co., Ltd.

1. Giới thiệu Công Ty TNHH Thang Máy Siam-Hitachi

2. Elevator Planning Guide

2. Hướng dẫn thiết kế thang máy

3. Decoration

3. Trang trí thang máy

1. Introduction of Siam-Hitachi Elevator Co., Ltd.

1. Giới thiệu Công Ty TNHH Thang Máy Siam-Hitachi

1. Introduction of Siam-Hitachi Elevator Co., Ltd.

1. Giới thiệu Công Ty TNHH Thang Máy Siam-Hitachi

- Siam-Hitachi Elevator Co., Ltd.
Công ty TNHH thang máy Siam-Hitachi



1974

- Siam Motors Co., Ltd. Became Thailand's sole distributor, Installation and service agent for Hitachi elevators and escalators.
- Siam Motors Co., Ltd. Trở thành nhà phân phối, đại lý lắp đặt và dịch vụ duy nhất của Thái Lan cho thang máy và thang cuốn Hitachi.

1992

- Siam-Hitachi Elevator Co., Ltd. Was established in a joint venture with Hitachi (Japan) Ltd. As a manufacturing base of Hitachi elevators and as a sole installation and distribution company in Thailand.
- Công ty TNHH Thang máy Siam-Hitachi được thành lập liên doanh với Công ty TNHH Hitachi (Nhật Bản) Là cơ sở sản xuất thang máy Hitachi và là công ty lắp đặt và phân phối duy nhất tại Thái Lan.



2017

- Hitachi elevator (Thailand) Co., Ltd. Was established as a 100% subsidiary of Siam-Hitachi Elevator Co., Ltd. For sales and service of elevators and escalators for domestic and neighboring countries market.
- Công ty TNHH Thang máy Hitachi (Thái Lan) được thành lập với tư cách là công ty con 100% vốn của Công ty TNHH Thang máy Siam-Hitachi chuyên kinh doanh và dịch vụ thang máy và thang cuốn cho thị trường trong nước và các nước lân cận.

1. Introduction of Siam-Hitachi Elevator Co., Ltd.

1. Giới thiệu Công Ty TNHH Thang Máy Siam-Hitachi

- New Factory (From 2012 – Present)
- Nhà máy mới (từ 2012 – hiện tại)



Address (địa chỉ) : 700/899 Moo3,
Amatanakorn Industrial Estate
T.Nongkakra, A.Panthong, Chonburi
20160

Year
Năm

- 2012 Start operation in new factory
2012 nhà máy mới bắt đầu hoạt động

Area
Diện tích

- Over 96,000 m²
Hơn 96,000 m²

Product
Sản phẩm

- Hitachi elevators (Speed 60-240 m/min)
Thang máy Hitachi (Tốc độ 60-240 m / phút)

Manpower
Nhân sự

- Approx. 400
Sấp xỉ 400

Business Outline
Đường lối kinh doanh

- Manufacturing and export of Hitachi elevators
Sản xuất và xuất khẩu thang máy Hitachi

Certificate
Chứng chỉ

- ISO 9001, 14001, 18001

2. Elevator Planning Guide

2. Hướng dẫn thiết kế thang máy

2. Elevator Planning Guide

2. Hướng dẫn thiết kế thang máy

• SPECIFICATION LIST

Danh sách đặc điểm kỹ thuật

Load: 630-1600kg
Tải trọng: 630 – 1600 kg

Speed: 60-180 m/s
Tốc độ: 1-3 m/s

Max. Travel Distance: 150m
Hành trình tối đa: 150m

Max. No. of cars in a group control: 8
Số lượng thang tối đa trong 1 nhóm: 8

Max. Stops: 48
Số điểm dừng tối đa: 48

Speed (m/min)

240										
210										
180										
150										
120										
105										
90										
60										
	450	630	825	900	1050	1150	1350	1600	1800	2000

Load (kg)

2. Elevator Planning Guide

2. Hướng dẫn thiết kế thang máy

• STANDARD FUNCTIONS

Danh sách chức năng tiêu chuẩn

Control System			
SA1	Simplex Collective Control	SA2	Floor Height Self Measurement
SA3	On-Cage (Car Top) Maintenance Operation	SA4	In-Cage Slow Speed Operation
SA5	Machine Room Debugging Operation		
System Protection			
SB1	Over Speed Electrical Protection	SB2	Overspeed Mechanical Protection
SB3	Rope Slipping Running Protection	SB4	Motor Overload (Thermal) Protection
SB5	Automatic Fault Detection	SB6	Automatic Fault Recording
SB7	Standby Regular Auto-Check	SB8	Double Brake-Safety Check Operation
SB9	Synchronous Motor Magnetic Pole Static Test	SB10	Lift-Position Abnormally Auto-Correction Function
SB11	Nearest Landing Operation	SB12	Anti-electromagnetic Interference
Safe Communication			
SC1	Interphone System (5 ways)		
Safe Riding			
SD1	Out of Door-Open Zone Alarm	SD2	Alarm System
SD3	Door Safety Return System	SD4	Full Load Bypass Operation
SD5	Overload Detection System	SD6	Overload Alarm
SD7	Next Drive (Door Open Abnormally)	SD8	Door Opening/Closing Time Abnormity Protection
SD9	Automatic Door Dwell Time Control	SD10	Automatic Door Dwell Time Adjustment
SD11	Number of Runs Indicator	SD12	Multi-Beam Protection (Applicable for center opening door without glass panel)
SD13	Inspection Indication in Hall Indicator	SD14	Current Floor Push-button Reopening Function
SD15	Overload Indicator (In Car)		

Emergency Solution			
SE1	Car Emergency Lighting	SE2	Fire Emergency Operation (Automatic)
Design for Comfort			
SF1	Parking Operation	SF2	Automatic Return Function
SF3	Start Torque Auto-Adjustment	SF4	Door-Stop Function (Maintenance)
SF5	Micro Levelling (Travel≥45m)	SF6	Advance Door Opening (Speed ≥120m/min)
SF7	Mischievous Call Cancellation	SF8	Opposite Direction Car Call Cancellation
SF9	Car Light Auto Turn-off	SF10	Car Fan Auto Turn-off
SF11	Abnormal Duration Hall Call Detection (Applicable for Simplex, Duplex and FH-10 only)	SF12	Car Floor Button Flashing
SF13	Car Call Deselect Function	SF14	Step-less Speed Control
SF15	Regenerative System Function (For load ≥ 1150kg with speed 180/min)	SF16	Door Bypass Detection
SF17	Overloading Hall Call Recovery Function (Applicable for Simplex, Duplex and FH-10 only)		

2. Elevator Planning Guide

2. Hướng dẫn thiết kế thang máy

• OPTIONAL FUNCTIONS

Danh sách chức năng tùy chọn

Control System			
OA1	Simplex Down Collective Control	OA2	Duplex Collective Control
OA3	Duplex Down Collective Control	OA4	FI-10
OA5	FI-100	OA6	FI-600
OA7	Independent Automatic Operation	OA8	VIP Service
OA9	Rush Hour Schedule Operation (Not applicable for FI-100)		
Safe Communication			
OB1	Contact at Control Panel (RS485)	OB2	Elevator Monitoring System (Computer Type)
OB3	Supervisory Panel (Dry Contact Type)	OB4	Twisted Pair Cable (1 pair) for CCTV
OB5	Twisted Pair Cable (1 pair) for BGM Interface	OB6	Contact at Control Panel (Dry Contact)
OB7	Camera Device Inside the Car		
Safe Riding			
OC1	Multi-Beam + Safety Edge Protection	OC2	Card Reader Interface (In Car) (RS485) (Not applicable when OE5 is selected.)

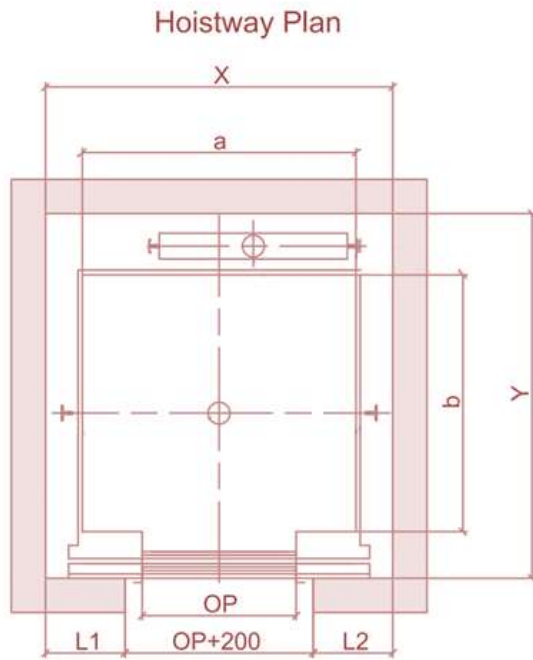
Emergency Solution			
OD1	Fireman Operation (Load≥825kg)	OD2	Automatic Rescue Device (ARD) (Maximum travel distance ≤ 30m)
OD3	EM. Operation for Power Failure (Manual)	OD4	EM. Operation for Power Failure (Auto)
OD5	Earthquake Emergency Operation	OD6	Pit Flood Operation
Design for Comfort			
OE1	Attendant Operation	OE2	Independent Operation
OE3	Voice Synthesizer	OE4	Arrival Chime (Car Top and Bottom)
OE5	Floor Lock Out Operation (Not applicable when OC2 is selected)	OE6	Door Opening Prolong Button
OE7	Hall Call Registration in Car Operating Panel (Applicable when OE1 is selected)	OE8	Sub Car Operating Panel
OE9	Double Opening Function (Not applicable for FI-100 and FI-600)	OE10	Horizontal Car Operating Panel
OE11	Braille Button	OE12	Regenerative System Function
OE13	EMC (Only applicable together with OE12)	OE14	Micro Levelling (Travel<45m)
OE15	Operation Status Indication at Hall Indicator	OE16	DFRS (Under FI-600)
OE17	Hall Call Deselect Function (Applicable for Simplex, Duplex and FI-10 only)	OE18	Advance Door Opening

2. Elevator Planning Guide

2. Hướng dẫn thiết kế thang máy

• HOISTWAY AND MACHINE ROOM

Giếng thang và phòng máy

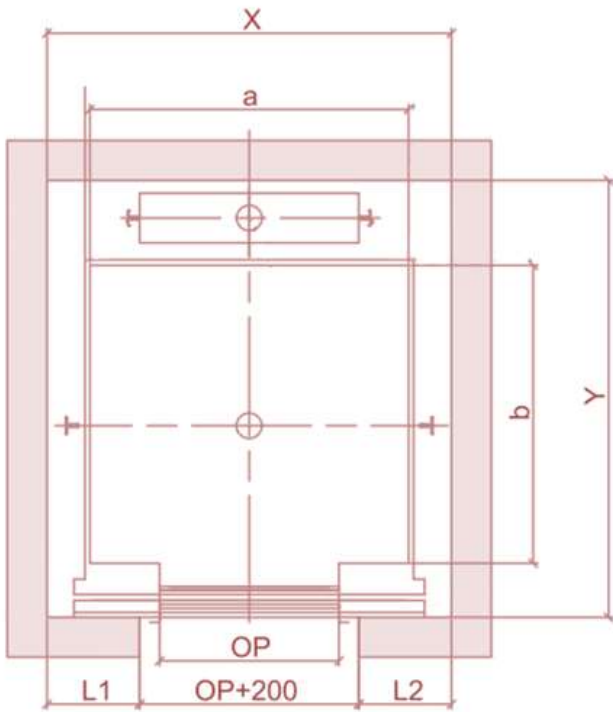


Load (kg)	Speed (m/min)	Car Size a x b (mm)	Door Opening		Front Wall Arrangement (mm)		Hoistway Dimension X x Y (mm)	Machine Room Size (mm)
			Type	Width OP (mm)	L1	L2		
630	60/90/105	1400x1100	2P-CO	800	415	415	1830x1680	1830x1680
825	60/90/105/120/150	1400x1350			425	425	1850x1950	1850x1950
		1400x1300			425	425	1850x1900	1850x1900
		1300x1400			425	425	1850x2000	1850x2000
900		1600x1350		900	475	475	2050x1950	2050x1950
1050		1600x1500			475	475	2050x2100	2050x2100
		1600x1400			475	475	2050x2000	2050x2000
		1500x1500			450	450	2000x2100	2000x2100
		1400x1600			450	450	2000x2200	2000x2200
		1500x1600			450	450	2000x2200	2000x2200

2. Elevator Planning Guide

2. Hướng dẫn thiết kế thang máy

• HOISTWAY AND MACHINE ROOM Giếng thang và phòng máy

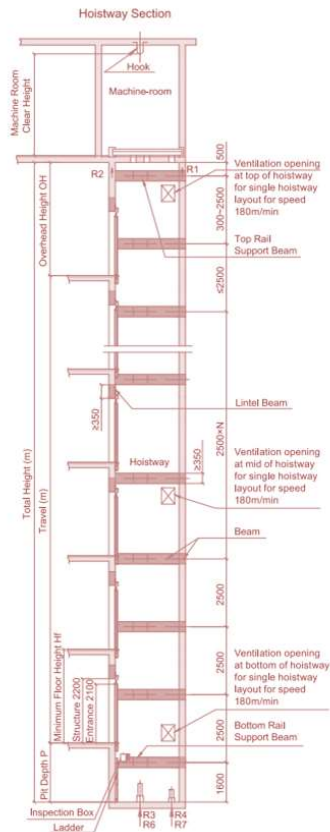


Load (kg)	Speed (m/min)	Car Size a x b (mm)	Door Opening		Front Wall Arrangement (mm)		Hoistway Dimension X x Y (mm)	Machine Room Size (mm)
			Type	Width OP (mm)	L1	L2		
1150	60/90/105/120/150	1800x1500	2P-CO	1000	550	550	2300X2200	2300X2200
1350		2000x1500		1100	625	625	2550X2200	2550X2200
1600		2000x1750					2550X2450	2550X2450
825	180	1400x1350	2P-CO	800	425	425	1850x2050	2250x2050
		1400x1300			425	425	1850x2000	2250x2000
		1300x1400			400	400	1800x2100	2225x2100
900		1600x1350		900	475	475	2050x2050	2350x2050
		1600x1500			475	475	2050x2200	2350x2200
		1600x1400			475	475	2050x2100	2350x2100
1050		1500x1500			450	450	2000x2200	2350x2200
		1400x1600			450	450	2000x2300	2350x2300
		1500x1600			450	450	2000x2300	2350x2300
1150	1800x1500	1000	550	550	2300x2200	2300x2200		
1350	2000x1500	1100	625	625	2550x2200	2550x2200		

2. Elevator Planning Guide

2. Hướng dẫn thiết kế thang máy

• OVERHEAD AND PIT DEPTH Khoảng vượt và hố thang



Load (kg)	Speed (m/min)	Overhead Height OH (mm)	Pit Depth P (mm)
630,825,900,1050	60	4350	1450
	90	4450	1450
	105	4550	1500
825,900,1050	120	4700	1600
	150	5100	1900
825,900,1050,1150,1350	180	5450	2400

Load (kg)	Speed (m/min)	Overhead Height OH (mm)				Pit Depth P (mm)			
		Counterweight location: Rear		Counterweight location: Side		Counterweight location: Rear		Counterweight location: Side	
		Travel $\leq 70m$	Travel $> 70m$	Travel $\leq 70m$	Travel $> 70m$	Travel $\leq 70m$	Travel $> 70m$	Travel $\leq 70m$	Travel $> 70m$
1150,1350,1600	60	4700	-	4700	-	1450	-	1450	-
1150	90	4650				1550	1600	1550	1600
	105	4800				1550	1600	1550	1600
	120	4850				1600	1650	1600	1650
1350,1600	90	4650		4700		1550	1600	1550	1600
	105	4800		4850		1550	1600	1550	1600
	120	4850		4900		1600	1650		
1150,1350,1600	150	5100				1900			

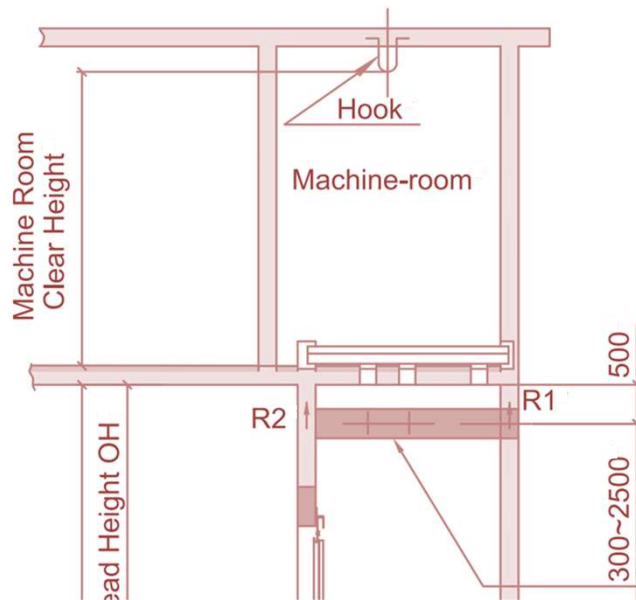
2. Elevator Planning Guide

2. Hướng dẫn thiết kế thang máy

- MACHINE ROOM HEIGHT AND HOOK CAPACITY**

Kích thước phòng máy và tải trọng của móc

Hoistway Section



Load (kg)	Speed (m/min)	Machine-room Clear Height (mm)	Hook Capacity (Tons)
630,825,900,1050	60/90/105	2100	3
825/900/1050	120/150	2450	4
1150/1350/1600	60/90/105/120/150		
825/900/1050/1150/1350	180		

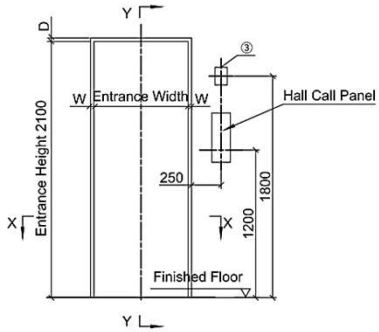
2. Elevator Planning Guide

2. Hướng dẫn thiết kế thang máy

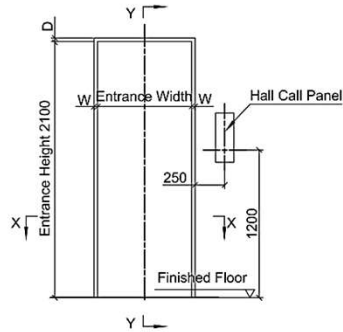
• ENTRANCE DESIGN

Thiết kế cửa tầng

Elevation of Entrance

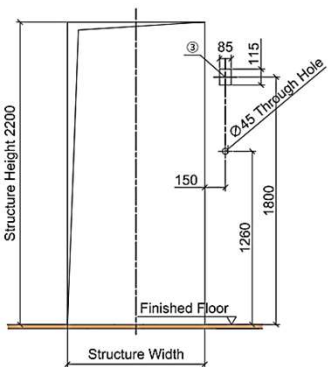


For Entrance With Fireman Switch

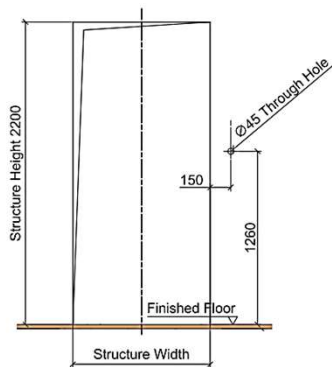


For Entrance Without Fireman Switch

Structure Opening of Entrance

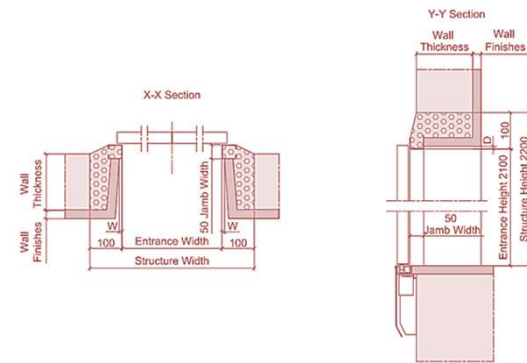


For Entrance With Fireman Switch



For Entrance Without Fireman Switch

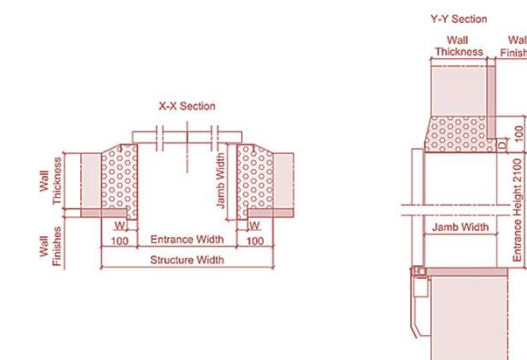
Narrow Jamb (AS-1X)



The followings shall be furnished by building contractors:

- Building Structure
- Wall and Floor Finishes
- Grouting Work

Wide Jamb (SS-1X)



Type	AS-1X	SS-1X
W	10	25
D	10	25

Note:

- ① Structural opening of entrance shall be furnished by building contractor.
- ② Unit of dimension shall be in mm unless otherwise stated.
- ③ Applicable only when fireman operation function with fireman switch is located at lift landing.

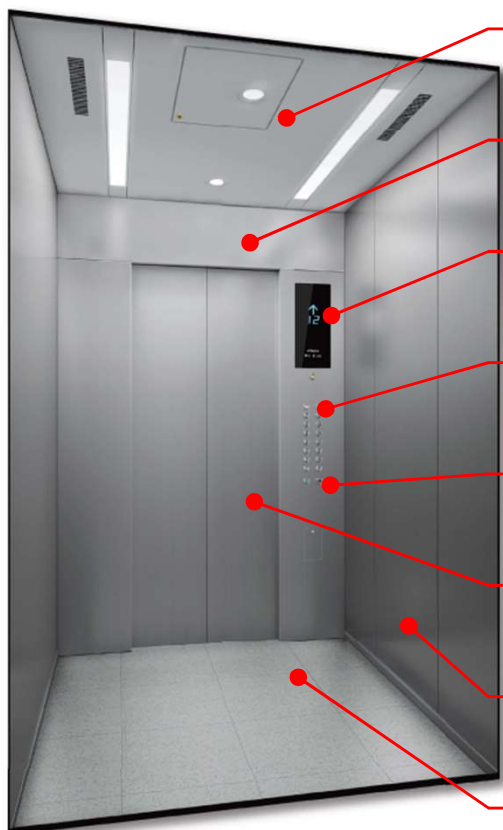
3. Decoration

3. Trang trí thang máy

3. Decoration

3. Trang trí thang máy

Standard Car Decoration (Trang trí cabin tiêu chuẩn)



Car Ceiling: RF-013A – Painted steel – WN01 (Ivory White) + LED downlight + LED Tube
Trần cabin: RF-013A – Thép sơn – WN01 (Trắng ngà) + LED âm trần + LED ống

Car Transom: Stainless steel hairline
Transom: Inox sọc nhuyễn

Car Position Indicator: Monochrome LCD
Hiển thị: LCD đơn sắc

Car Operating Panel: GOPR-820
Bảng điều khiển: GOPR-820

Car Front Return Panel: Stainless steel hairline
Vách trước: Inox sọc nhuyễn

Car Door: Stainless steel hairline
Cửa cabin: Inox sọc nhuyễn

Car Walls: Stainless steel hairline
Vách cabin: Inox sọc nhuyễn

Car Floor: Vinyl tile (A-26)
Sàn cabin: Gạch Vinyl

3. Decoration

3. Trang trí thang máy

Car Ceiling (With Car Top Emergency Exit)

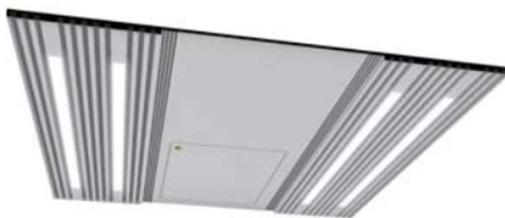
Trần cabin (với lối thoát hiểm)



RF-013A
Painted Steel_WN01 (Ivory White)

Standard For Normal Car

Tiêu chuẩn cho cabin thường



CE-015A
Painted Steel_WN01 (Ivory White)



DP-016A
Painted Steel_YM47 (Matte Champagne)



RF-056A
Painted Steel_WN01 (Ivory White)
(Select when false ceiling is by Client)

3. Decoration

3. Trang trí thang máy

Material

Vật liệu



Rose Gold

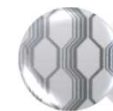


Titanium Gold



Champagne Gold

Colour
Stainless
Steel
Hairline
Thép không
 gỉ màu



MD-351



MD-315



PT-014

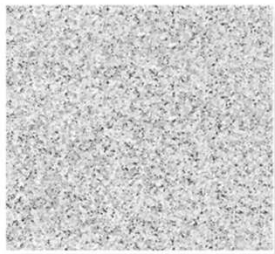
Etching
Pattern
Mẫu khắc

3. Decoration

3. Trang trí thang máy

Car Floor (Vinyl Tile) Sàn Cabin (Sàn Vinyl)

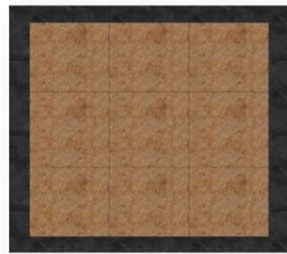
A-26



S-048



*FL-P009



S-693



Handrail Tay vịn



AA-Y138

Stainless Steel Hairline/Mirror



AA-BS

Stainless Steel Hairline

*Note: (The above represents the whole floor area in the elevator car.)

3. Decoration

3. Trang trí thang máy

Car Operating Panel

(With faceplate: Stainless steel hairline)
Hộp gọi trong cabin
(Với mặt hoàn thiện: Inox sọc nhuyễn)



STANDARD
Tiêu chuẩn

GOPR-820
Indicator:
Monochrome LCD

GOPR-820
Indicator:
Dot Matrix

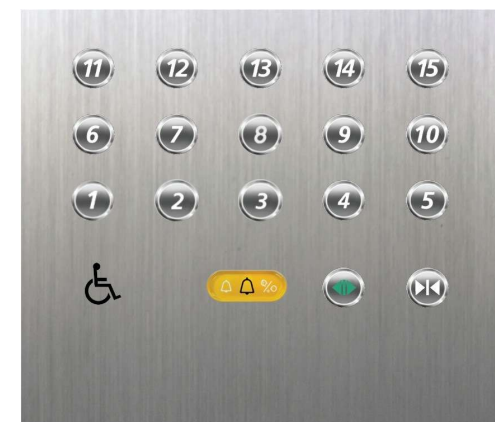
GOP-198
Indicator:
Monochrome LCD

GOP-198
Indicator:
Dot Matrix

GOP-677
Indicator:
Colour LCD

Horizontal Car Operating Panel

(With faceplate: Stainless steel hairline)
Hộp gọi cho người đi xe lăn trong cabin
(Với mặt hoàn thiện: Inox sọc nhuyễn)



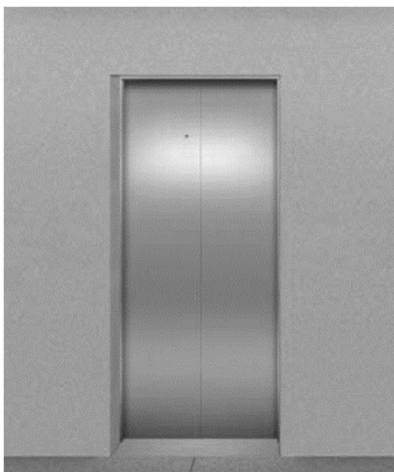
GOP-610
Button: WL-MW

3. Decoration

3. Trang trí thang máy

Door Jamb

Jamb cửa

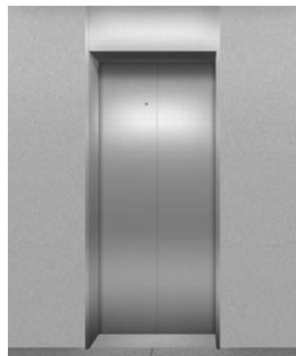


Jamb frame: AS-1X narrow type
Stainless steel hairline
Door panel: Stainless steel hairline

STANDARD
Tiêu chuẩn



Jamb frame: SS-1X wide type
Stainless steel hairline
Door panel: Stainless steel hairline



Jamb frame: SL-2X wide type with transom
Stainless steel hairline
Door panel: Stainless steel hairline



Jamb frame: TS-1X wide type
Stainless steel hairline
Door panel: Stainless steel hairline



Jamb frame: TL-2X wide type with transom
Stainless steel hairline
Door panel: Stainless steel hairline

3. Decoration

3. Trang trí thang máy

Hall Operating Panel

(With faceplate: Stainless steel hairline)

Hộp gọi ngoài sảnh

(Với mặt hoàn thiện: Inox sọc nhuyễn)



STANDARD
Tiêu chuẩn

VIB-820
Indicator: Monochrome LCD,
Button: WL-MWB
(Surface-mount type)



STANDARD
Tiêu chuẩn

VIB-820W
Indicator: Monochrome LCD,
Button: WL-MWB
(Surface-mount type)



VIB-673
Indicator:
Monochrome LCD,
Button: WL-MW
(Surface-mount type)



VIB-673W
Indicator:
Monochrome LCD,
Button: WL-MW
(Surface-mount type)



VIB-187A
Indicator: Colour LCD,
Button: FL-PW
(Embedded type)



VIB-187WA
Indicator: Colour LCD,
Button: FL-PW
(Embedded type)



HB-673
Button: WL-MW
(Surface-mount type)



HBC-820
Button: WL-MWB
(Surface-mount type)

3. Decoration

3. Trang trí thang máy

Hall Indicator

Hộp hiển thị ngoài sảnh



GHI-675

(With faceplate: stainless steel hairline)



GHI-575

(Without faceplate: incorporate into transom)

Hall Lantern

(With faceplate: Stainless steel hairline)

Đèn hiển thị ngoài sảnh

(Với mặt hoàn thiện: Inox sọc nhuyễn)



GHL-673

Surface mounted type,
With chime



GHL-820

Surface mounted type,
With chime

Button

Nút nhấn



WL-MWB



FL-PW



WL-MW



GL-MW

STANDARD
Tiêu chuẩn

*Note: Braille button are available as options (**MAXIMUM 2 DIGIT**)

*Lưu ý: Nút nhấn chữ nổi là tùy chọn (CHỈ 2 KÝ TỰ)

3. Decoration

3. Trang trí thang máy

Car Decoration

Item	Specification	● Standard ● Option
Ceiling Type	With car top emergency exit: RF-013A	●
	With car top emergency exit: CE-015A / DP-016A / RF-056A	○
Car Door/Transom /3 Side Walls /Front Return Wall	Stainless steel hairline	●
	Stainless steel mirror	○
	Stainless steel hairline etching, Stainless steel mirror etching	○
	Colour stainless steel hairline	○
	Rust proof painted steel (RPP)	○
Kickplate	Stainless steel hairline	●
Car Sill	Extruded hard aluminum	●
	Stainless steel hairline	○
Car Floor	Vinyl tile (FL-P009 / A-26 / S-048 / S-693)	●
	Floor recess (20mm / 25mm / 30mm), Finishes by Others	○
Handrail	AA-Y138 / AA-BS	○
Car Operating Panel (At Front Return Wall)	GOPR-820	●
	GOP-677 / GOP-198	○
Car Operating Panel (At Side Wall)	GOP-198	○

Buttons

Item	Specification	● Standard ● Option
Button	WL-MWB	●
	WL-MW / GL-MW / FL-PW	○

3. Decoration

3. Trang trí thang máy

Entrance

Item	Specification	● Standard ● Option
Jamb Type	AS-1X, Jamb width=50mm	●
	SS-1X, Jamb width≤300mm	○
	SL-2X, Jamb width≤300mm	○
	TS-1X, Jamb width≤300mm	○
	TL-2X, Jamb width≤300mm	○
Jamb Finish	Stainless steel hairline	●
	Stainless steel mirror	○
	Rust proof painted steel (RPP)	○
Landing Door	Stainless steel hairline	●
	Stainless steel mirror	○
	Stainless steel hairline etching, Stainless steel mirror etching	○
	Colour stainless steel hairline	○
	Rust proof painted steel (RPP)	○
Landing Sill	Extruded hard aluminum	○
	Stainless steel hairline	○
Hall Operating Panel	Surface-mount type: VIB-820 / VIB-820W	●
	Surface-mount type: VIB-673 / VIB-673W / HB-673	○
	Embedded type: VIB-187A / VIB-187WA	○
Hall Lantern	GHL-673 / GHL-820	○
Hall Indicator	GHI-675 (With stainless steel hairline faceplate)	○
	GHI-575 (Without faceplate, incorporate into transom panel)	○

END

MACHINE ROOM ELEVATOR – MCA (THAILAND)

Thang máy có phòng máy – MCA (Thái Lan)



Hitachi Social Innovation is
POWERING GOOD